

Radio Cassette-Corder

Operating instructions



©2003 Sony Corporation Printed in Malaysia

Printed using VOC (Volatile Organic Compound)-free vegetable oil based ink.

http://www.sony.net/

"WALKMAN" is a registered trademark of Sony Corporation to represent Headphone Stereo products.

WALKMAN is a trademark of Sony Corporation.

The validity of the CE marking is restricted to only those countries where it is legally enforced, mainly in the countries EEA (European Economic Area).

WARNING

To prevent fire or shock hazard, do not expose the unit to rain or moisture.

Do not install the appliance in a confined space, such as a bookcase or built-in cabinet.

For customers in the United States Owner's Record

The model number is located on the front and the serial number is located inside the cassette holder. Record these numbers in the space provided below. Refer to them whenever you call upon your Sony dealer regarding this product.
Model No. WM-GX788
Serial No. _____

Product registration

Please register this product on line at www.sony.com/productregistration.
<<http://www.sony.com/productregistration>>

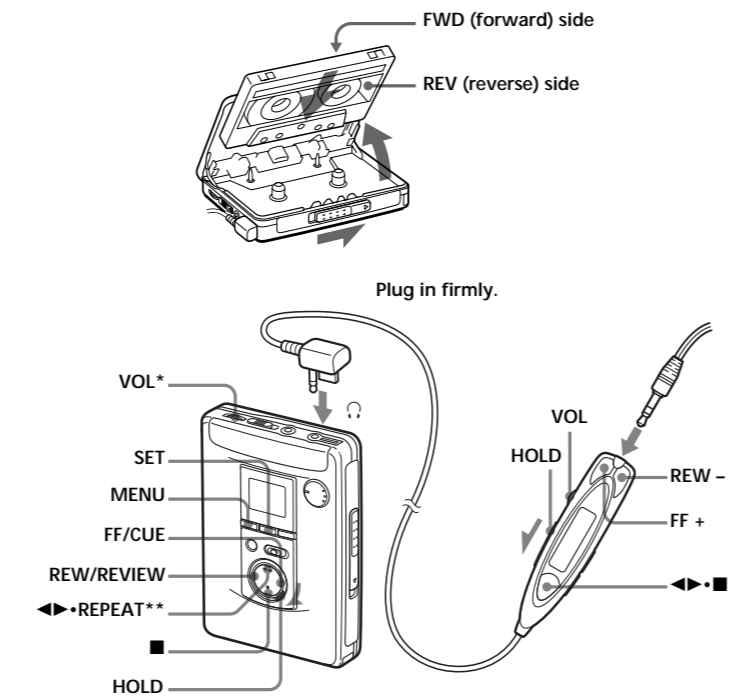
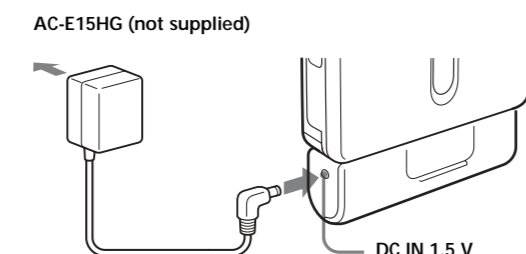
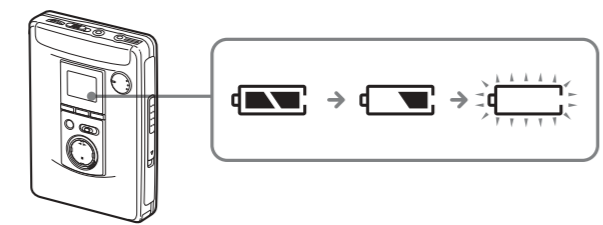
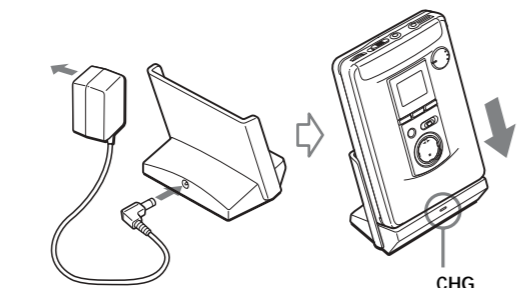
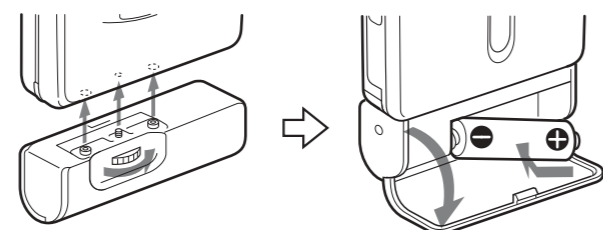
Proper registration will enable us to send you periodic mailings about new products, services, and other important announcements. Registering your product will also allow us to contact you in the unlikely event that the product needs adjustment or modification. Thank you.

INFORMATION

This equipment has been tested and found to comply with the limits for a Class B digital device, pursuant to Part 15 of the FCC Rules. These limits are designed to provide reasonable protection against harmful interference in a residential installation. This equipment generates, uses, and can radiate radio frequency energy and, if not installed and used in accordance with the instructions, may cause harmful interference to radio communications. However, there is no guarantee that interference will not occur in a particular installation. If this equipment does cause harmful interference to radio or television reception, which can be determined by turning the equipment off and on, the user is encouraged to try to correct the interference by one or more of the following measures:

- Reorient or relocate the receiving antenna.
 - Increase the separation between the equipment and receiver.
 - Connect the equipment into an outlet on a circuit different from that to which the receiver is connected.
 - Consult the dealer or an experienced radio/TV technician for help.
- This device complies with Part 15 of the FCC Rules. Operation is subject to the following two conditions:
(1) This device may not cause harmful interference, and
(2) this device must accept any interference received, including interference that may cause undesired operation.

You are cautioned that any changes or modifications not expressly approved in this manual could void your authority to operate this equipment.



Note
Tapes recorded with setting to "2x" cannot be played properly on a cassette player/tape recorder without this function.

- To prevent fire, do not cover the ventilation of the apparatus with newspapers, table-cloths, curtains, etc. And don't place lighted candles on the apparatus.
- To prevent fire or shock hazard, do not place objects filled with liquids, such as vases, on the apparatus.
- Certain countries may regulate disposal of the battery used to power this product. Please consult with your local authority.

Preparations

Prepare a dry battery (not supplied) or the rechargeable battery (supplied).

Dry Battery A

Attach the supplied battery case, and then insert one R6 (size AA) battery with correct polarity.

Note

For maximum performance we recommend that you use a Sony alkaline battery.

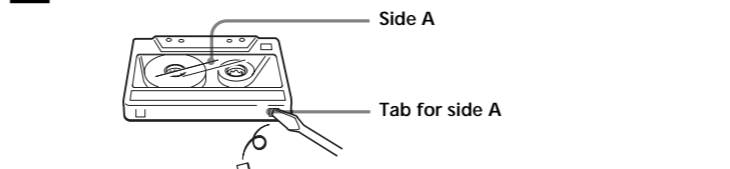
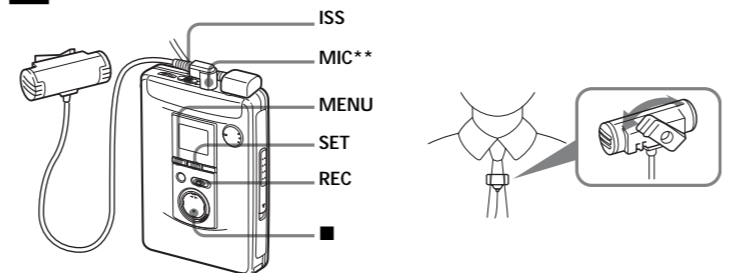
Rechargeable Battery B

Charge the rechargeable battery before using it for the first time.

- 1 Insert the supplied rechargeable battery NH-14WM (A) into the rechargeable battery compartment with correct polarity.
- 2 Connect the supplied AC power adaptor to the charging stand, plug in the AC power adaptor to the house current (mains). If the plug does not fit to your mains, attach the supplied AC plug adaptor (Saudi Arabian model only).
- 3 Place the main unit on the charging stand. The CHG lamp will light up. Full charging takes about 6 hours. The CHG lamp will go off when the battery is fully charged.

Note

Do not use the unit while charging. Remove the unit from the charging stand when using it.
- If you operate the unit while charging, the battery will not be charged.
- If you operate the unit while charging, it may cause malfunction.
- Do not place the unit on the charging stand without the rechargeable battery. Otherwise, it may cause malfunction.



- * There is a tactile dot beside VOL on the main unit to show the direction to turn up the volume.
- ** The button or jack has a tactile dot.

When to replace/charge the battery C

Replace or charge the battery when " " flashes in the display.

Battery life* (Approx. hours)	
Sony alkaline LR6 (SG)**	
Tape playback	44
Radio reception	56
MIC recording	15
Radio recording	12

Rechargeable battery NH-14WM (A)	
Tape playback	26
Radio reception	34
MIC recording	9
Radio recording	7

Sony alkaline LR6 (SG)** and Rechargeable NH-14WM (A)	
Tape playback	70
Radio reception	90
MIC recording	24
Radio recording	19

* Measured value by the standard of JEITA (Japan Electronics and Information Technology Industries Association). (Using a Sony HF series cassette tape)
** When using a Sony LR6(SG) "STAMINA" alkaline dry battery (produced in Japan).

Notes

- The battery life may be shorter depending on the operating condition, the surrounding temperature and battery type.
- The AVLS setting (see "Using the Menu") will be cancelled when you replace the battery.

House Current D

You must purchase an AC power adaptor AC-E15HG to operate this unit using house current. Remove the rechargeable battery if inserted. Attach the battery case and connect the AC power adaptor AC-E15HG (not supplied) to the DC IN 1.5 V jack of the battery case and to the wall outlet. Do not use any other AC power adaptor. Specifications for AC-E15HG vary for each area. Check your local voltage and the polarity of the plug before purchasing.

Playing a Tape E

- 1 Insert a cassette and if the HOLD function is on, slide the HOLD switch in the opposite direction of the arrow to unlock the controls.
- 2 Press MENU repeatedly to set " " (the cursor) in the display to REC/PB. Then press SET to select "2x" or none (normal speed) which is the same position as that used for recording. To playback commercially available music tape, etc., select normal (no indication).
- 3 Press ◀▶•REPEAT on the main unit and adjust the volume with VOL. (On the remote control, press ◀▶(play)•■(stop).)

When adjusting the volume on the remote control Set the VOL control on the main unit to around 6.

When adjusting the volume on the main unit Set the VOL control on the remote control at maximum.

Operation on the remote control

To	Press
Switch playback to the other side	◀▶•■ for 2 seconds or more during playback
Stop playback	◀▶•■ once during playback

Operation on the main unit

To	Press
Switch playback to the other side	◀▶•REPEAT during playback
Stop playback	■ (stop)

Other tape operations

To	Press
Fast forward*	FF/CUE (FF + on the remote control) during stop
Rewind*	REW/REVIEW (REW - on the remote control) during stop
Search forward during playback (CUE)	Press and hold FF/CUE (FF + on the remote control) and release it at the point you want.
Search backward during playback (REVIEW)	Press and hold REW/REVIEW (REW - on the remote control) and release it at the point you want.

To	Press
Play the next track/succeeding 9 tracks from the beginning (AMS**)	FF/CUE (FF + on the remote control) once/repeatedly during playback
Play the current track/previous 8 tracks from the beginning (AMS**)	REW/REVIEW (REW - on the remote control) once/repeatedly during playback
Play the other side from the beginning (Skip Reverse function)	FF/CUE (FF + on the remote control) for 2 seconds or more during stop
Play the same side from the beginning (Rewind Auto Play function)	REW/REVIEW (REW - on the remote control) for 2 seconds or more during stop

* Press ◀▶•■ on the remote control during fast forward or rewind to start playback.
**Automatic Music Sensor

A-B Repeat

A-B Repeat plays back repeatedly any portion of the tape you specified. Specify by tagging the beginning (point A) and the end (point B) of the portion during playback.

On the main unit

- 1 Press ◀▶•REPEAT for 2 seconds or more during playback to tag point A. "A" will flash in the display of the main unit.
- 2 Press ◀▶•REPEAT again to tag point B. "A-B" will flash and the tape will move rapidly to point A. Then "REP" appears in the display and the specified portion is played repeatedly.

On the remote control

- 1 Press ◀▶•■ twice quickly during playback to tag point A.
- 2 Press ◀▶•■ once more to tag point B. The tape will be rewound to point A. Then the specified portion is played repeatedly.

To stop the A-B Repeat playback

Press ◀▶•REPEAT on the main unit. On the remote control, press ◀▶•■.

To reset A-B Repeat

When you want to change a specific portion, stop the A-B Repeat playback and tag point A and point B again.

Notes

- You cannot specify a repeat portion that includes both sides of the tape.
- You cannot specify a repeat portion shorter than 2 seconds.
- After repeated operation, the actual portion that is played back may shift somewhat from the exact portion specified with the tags due to tape slack.

- A-B Repeat stops automatically after repeating 50 times.
- Do not use the A-B Repeat function with tapes longer than 90 minutes. If you do, the tape may be damaged.

Recording F

You can record radio programs from the built-in radio, or record with the supplied microphone. In either case, use a new or fully charged battery.

Note

If the record-protect tab is broken, you cannot record on that side.

- 1 Insert a normal (TYPE I) tape. To record on both sides Insert the cassette with the side to be first recorded on as the FWD (forward) side*. * Make sure that "FWD" is displayed. If not, press and hold ■ until "REV" changes to "FWD". To record on one side only Insert the cassette with the side to be recorded on as the REV (reverse) side**. **Make sure that "REV" is displayed. If not, press and hold ■ until "FWD" changes to "REV".

Note When the cassette holder is opened, the direction of the tape will be automatically set to "FWD".

Notes on recording

- The recording level is fixed.
- Sound emphasis (RV, MB, or GRV) and AVLS settings do not affect recording.
- Actual recording will start about 2 seconds (3 seconds when "2x" is selected for recording time) after you slide the REC button. Slide the REC button about 2 seconds (3 seconds when "2x" is selected for recording time) before the moment you want to start recording, or you will miss the beginning of your recording.
- When recording on both sides, recording will not be made for about 10 seconds while the tape is switching sides.
- Do not use a high-position (TYPE II) or metal (TYPE IV) tape. If you do, the sound may be distorted when you play back the tape, or the previous recording may not be erased completely.
- Do not connect or disconnect the headphones/earphones to/from while recording from the radio. The recording condition may change abruptly, or noise may be recorded.
- To avoid noise interference, do not place it near a lamp cord or a fluorescent lamp when recording with the microphone.
- If a howling effect occurs, turn down the volume.
- All other operation cannot be made while recording. For other operation, stop recording first.

- 4 Slide REC. "REC" appears in the display and recording starts after about 2 seconds. If you have started recording from the FWD side, recording will switch to reverse side automatically at the end of the FWD side.

To stop recording

Press ■ (on the remote control, press ◀▶•■ to stop recording).

To reduce noise while recording AM programs

Set the ISS (Interference Suppress Switch) to the position that reduces noise the most.

To monitor the recording sound

You can monitor the recording sound through headphones/earphones. Adjust monitoring level using VOL.

Note

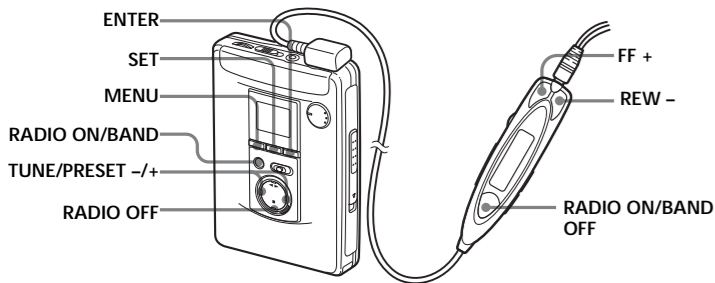
You may hear some noise in the monitor sound in the RV, MB, or GRV mode (see "Using the Menu"), but this does not affect recording.

Notes on recording

- The recording level is fixed.
- Sound emphasis (RV, MB, or GRV) and AVLS settings do not affect recording.
- Actual recording will start about 2 seconds (3 seconds when "2x" is selected for recording time) after you slide the REC button. Slide the REC button about 2 seconds (3 seconds when "2x" is selected for recording time) before the moment you want to start recording, or you will miss the beginning of your recording.
- When recording on both sides, recording will not be made for about 10 seconds while the tape is switching sides.
- Do not use a high-position (TYPE II) or metal (TYPE IV) tape. If you do, the sound may be distorted when you play back the tape, or the previous recording may not be erased completely.
- Do not connect or disconnect the headphones/earphones to/from while recording from the radio. The recording condition may change abruptly, or noise may be recorded.
- To avoid noise interference, do not place it near a lamp cord or a fluorescent lamp when recording with the microphone.
- If a howling effect occurs, turn down the volume.
- All other operation cannot be made while recording. For other operation, stop recording first.

To prevent a tape from being accidentally recorded over G

Break off the tabs from side A and/or B. To reuse the tape for recording, cover the tab hole with adhesive tape.



Listening to the Radio

- 1 Press RADIO ON/BAND to turn on the radio.
- 2 Press RADIO ON/BAND repeatedly to select AM or FM.
- 3 Press MENU on the main unit repeatedly and set the cursor in the display to TUNE MODE.

- 4 For manual tuning
 - ① Press SET to choose MANUAL.
 - ② Press TUNE/PRESET + or - repeatedly to tune in to the desired station. Hold down TUNE/PRESET + or - for a few seconds to scan for stations.

- For preset tuning**
- ① Press SET to choose PRESET.
 - ② Press TUNE/PRESET + or - repeatedly to recall the desired preset station. To use preset tuning, preset stations first (see "Presetting Radio Stations").

To turn off the radio
Press RADIO OFF .

To improve the broadcast reception

- For AM: Reorient the unit itself.
- For FM: Extend the remote control cord (antenna). If the reception is still not good, press MENU repeatedly to set the cursor in the display to FM MODE. Then press SET to choose from "MONO" (monaural), "LOCAL" or none (stereo) for best reception.

To operate from the remote control

To turn on the radio, press RADIO ON/BAND•OFF for more than 1 second (while the tape is in stop mode only). To select the band, press RADIO ON/BAND•OFF for more than 1 second while the radio is on. To tune in or recall a preset station, press FF + or REW -. To turn off the radio, press RADIO ON/BAND•OFF.

Presetting Radio Stations

You can preset up to 30 stations—20 for FM and 10 for AM (for the JPN area*, up to 16 stations—8 for FM and 8 for AM).
* Only if available. See "Receiving Stations Outside Your Country/Region".

Presetting Automatically Scanned Stations

- 1 Press RADIO ON/BAND to turn on the radio.
- 2 Press RADIO ON/BAND repeatedly to select AM or FM.
- 3 Press and hold ENTER for more than 3 seconds. Preset number 1 will flash in the display and the main unit starts scanning the stations from the lower frequencies and stops for about 5 seconds when a station is received.

- 4 If you wish to preset the currently received station, press ENTER while the preset number is flashing. The received station is preset on preset number 1 and the unit starts scanning for the next receivable station.

- 5 Repeat step 4 until all receivable stations are preset.

To stop scanning

Press RADIO OFF. The radio is turned off at the same time.

Notes

- If stations are already stored, the newly preset stations replace the old ones when the above procedure is completed.
- If stations cannot be preset automatically, preset them manually.

Presetting Stations Manually

- 1 Press RADIO ON/BAND to turn on the radio.
- 2 Press RADIO ON/BAND repeatedly to select AM or FM.
- 3 Press ENTER.

The frequency digits will flash in the display.

- 4 While the frequency digits are flashing, tune in to a station you wish to store using TUNE/PRESET + or - and press ENTER.

The preset number will flash in the display.

- 5 While the preset number is flashing, select the preset number you want using TUNE/PRESET + or - and press ENTER.

Notes

- If you cannot complete step 4 or 5 while the indicators are flashing, repeat from step 3.
- If a station is already stored, the new station replaces the old one.

Playing the Preset Radio Stations

- 1 Press RADIO ON/BAND to turn on the radio.
- 2 Press RADIO ON/BAND repeatedly to select AM or FM.
- 3 Press MENU repeatedly to set the cursor in the display to TUNE MODE. Then press SET to display "PRESET".
- 4 Press TUNE/PRESET + or -.

To cancel a stored station

- 1 Follow the procedure above and in step 4, select the preset number you want to cancel and then press ENTER. The frequency digits will flash in the display.
- 2 Press and hold TUNE/PRESET + or -. The frequency digit starts running up or down. Keep holding down the button until "- - - -" is displayed.
- 3 Press ENTER while "- - - -" is flashing. A preset number will flash in the display.
- 4 Press ENTER to cancel the stored station.

Scanning the Preset Radio Stations — DAPS (Digital Auto Preset Scanning)

- 1 Press RADIO ON/BAND to turn on the radio.
- 2 Press RADIO ON/BAND repeatedly to select AM or FM.
- 3 Press and hold RADIO ON/BAND for 2 seconds or more.

The preset stations of the selected band will be played for about 5 seconds each. (During DAPS the indicators in the display flash.)

- 4 Press RADIO ON/BAND again to select the station while the desired preset station is being played.

Notes

- If there are no stations stored, the DAPS function does not work.
- Until a station is selected in step 4, the DAPS function turned on in step 3 will continue.

Receiving Stations Outside Your Country/Region (Excluding European, Saudi Arabian, and Chinese models)

- 1 Press RADIO ON/BAND to turn on the radio.
- 2 Press ENTER. The frequency digits will flash in the display.
- 3 Press and hold RADIO ON/BAND until "Eur", "USA" or "JPN" flashes.
- 4 Press RADIO ON/BAND repeatedly to select "Eur", "USA" or "JPN" and press ENTER.
- 5 Tune in to and store stations as necessary following the procedure of "Listening to the Radio" and "Presetting Radio Stations".

Area indication and frequency range

Area*	Frequency range	
	FM (MHz)	AM(kHz)
USA	87.5 - 108	530 - 1 710
JPN	76.0 - 90.0	531 - 1 710

* Eur :European and other countries/regions
USA :USA, Canada, and Central and South America
JPN: Japan

Using the Menu

Adjusting Playback Modes

On the main unit:
Press MENU repeatedly to set the cursor in the display to PB MODE. Then press SET to select the desired mode.

On the remote control:
Press MODE repeatedly. With each press, the indications change.

To play	Select
both sides repeatedly	
both sides once from the FWD side	

Emphasizing Sound

- On the main unit:**
- 1 Press MENU repeatedly to set the cursor in the display to SOUND.
 - 2 Press SET repeatedly to select the sound emphasis of your choice.

On the remote control:

- 1 Press SOUND repeatedly. With each press, the indications change.

The indications change as follows:

- RV : Sound Revitalizer Emphasizes treble sound.
- MB : Mega Bass Emphasizes bass sound (moderate effect).
- GRV : Groove Emphasizes bass sound (strong effect).
- no message : normal (no effect)

Note

If the sound is distorted with the mode "GRV", turn down the volume of the main unit or select other modes.

Protecting Your Hearing — AVLS (Automatic Volume Limiter System)

The maximum volume is kept down to protect your ears. **On the main unit:**
Press MENU repeatedly in the playback, stop or radio mode to set the cursor in the display to AVLS. Then press SET to show "AVLS".

On the remote control:

Hold down MODE for more than 10 seconds until "AVLS" appears in the display.

To cancel the AVLS function

Press SET so that "AVLS" disappears from the display on the main unit.

On the remote control, hold down MODE again for more than 3 seconds until "AVLS" disappears.

Using Other Functions

Adjusting the Tape Playback Speed

You can adjust the playback speed using SPEED CONTROL. Turn SPEED CONTROL to: - (slow) to play back at a slower speed. Center position to play back at normal speed. + (fast) to play back at a faster speed.

Note

The SPEED CONTROL works in the playback mode only. Recording will be made independent of this control.

Locking the Controls — HOLD Function

Slide the HOLD switch in the direction of the arrow to lock the controls of the main unit or the remote control.

Using the Tape Counter

The tape counter is displayed on the main unit during playback, recording, fast forward, rewind, CUE, REVIEW and stop (except when the radio is turned on). The number will increase when playing back the FWD side, and decrease when playing back the REV side. To reset the counter to "000", press ENTER/COUNTER RESET.

Notes

- The tape counter may show some deviation.
- The tape counter will not be displayed when the cassette compartment is empty.

Precautions

For the customers in the USA and Canada

RECYCLING NICKEL METAL HYDRIDE BATTERIES
Nickel Metal Hydride batteries are recyclable. You can help preserve our environment by returning your used rechargeable batteries to the collection and recycling location nearest you.



For more information regarding recycling of rechargeable batteries, call toll free 1-800-822-8837, or visit <http://www.rbrcc.org/>.

Caution: Do not handle damaged or leaking Nickel Metal Hydride batteries.

On charging

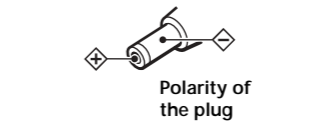
- The supplied charging stand can be used only with this unit. No other model can be charged using this stand.
- Remove the AC power adaptor from the wall outlet as soon as possible after the rechargeable battery has been charged. Overcharging may damage the rechargeable battery.
- The charging stand and the rechargeable battery may become warm during charging, but this is not a problem.
- Do not tear off the film on the rechargeable battery.
- Use only the supplied charging stand to charge the supplied rechargeable battery.
- Be sure not to short-circuit the battery. When you carry it with you, use the supplied carrying case. If you are not using the case, do not carry the battery with other metallic objects such as keys, rings in your pocket.
- If the rechargeable battery is new or has not been used for a long time, it may not be charged completely until you use it several times.

On batteries

- Do not charge a dry battery.
- Do not carry the dry or rechargeable batteries with coins or other metallic objects. It can generate heat if the positive and negative terminals of the batteries are accidentally contacted by a metallic object.
- When you do not use the main unit for a long time, remove the battery to avoid any damage caused by battery leakage and subsequent corrosion.

On AC power adaptor

- Use only the supplied AC power adaptor (for charging stand) and recommended AC power adaptor (for battery case). Do not use any other AC power adaptor.



- Connect the AC power adaptor to an easily accessible AC outlet. Should you notice an abnormality in the AC power adaptor, disconnect it from the AC outlet immediately.
- Do not touch the AC power adaptor with wet hands.

On handling

- Do not leave the unit in a location near heat sources, or in a place subject to direct sunlight, excessive dust or sand, moisture, rain, mechanical shock, or in a car with its windows closed.
- We do not recommend the use of tape longer than 90 minutes. They are very thin and tend to be stretched easily. This may cause malfunction of the unit or sound deterioration.
- The LCD display may become hard to see or slow down when using the unit at high temperatures (above 40°C/104°F) or at low temperatures (below 0°C/32°F). At room temperature, the display will return to its normal operating condition.
- If the unit has not been used for long, set it in the playback mode to warm up for a few minutes before you start using again.

On the remote control

Use the supplied remote control only with this unit.

On headphones/earphones

Road safety

Do not use headphones/earphones while driving, cycling, or operating any motorized vehicle. It may create a traffic hazard and is illegal in some areas. It can also be potentially dangerous to play your headphones/earphones at high volume while walking, especially at pedestrian crossings. You should exercise extreme caution or discontinue use in potentially hazardous situations.

Preventing hearing damage

Do not use headphones/earphones at high volume. Hearing experts advise against continuous, loud and extended play. If you experience a ringing in your ears, reduce volume or discontinue use.

Caring for others

Keep the volume to a moderate level. This will allow you to hear outside sounds and to be considerate to the people around you.

On maintenance

- Clean the tape head and tape path, using a cotton swab and commercially available cleaning solvent after every 10 hours of use.
- To clean the exterior, use a soft cloth slightly moistened in water. Do not use alcohol, benzine or thinner.
- Clean the headphones/earphones and remote control plugs periodically.
- Clean the battery case terminals (both inside and outside) and the terminals periodically with a cotton swab or soft cloth as illustrated.

Troubleshooting

The sound drops out or comes with excessive noise.

- Clean the headphones/earphones and remote control plugs.

The unit does not operate at all.

- Charge the battery or replace the dry battery with a new one.
- HOLD is activated. Deactivate HOLD.

Tape operation is not possible.

- Insert a cassette tape.

The volume cannot be turned up.

- If AVLS is on, turn it off.

A beep sounds and recording is not possible when REC is slid.

- If the tab of the tape is broken off, cover the tab hole with adhesive tape.

The display and the operations are not normal.

- Remove the power sources for 15 seconds or more, and then set them again.

The radio and playback operates but recording is not possible.

- This condition may occur when the battery becomes weak. Replace or charge the battery.

Specifications

Radio section

Frequency range	FM:	76.0 - 90.0 MHz (Japan) 87.5 - 108 MHz (other countries/regions)
AM:	531 - 1 710 kHz (Japan) 530 - 1 710 kHz (North, Central, and South America) 531 - 1 602 kHz (other countries/regions)	

Tape section

Frequency response	Playback: 40 - 15 000 Hz Recording/playback: 100 - 8 000 Hz
Output	Headphones (🔊) jack Load impedance 8 - 300 Ω
Input	Microphone (MIC) jack

General

Power requirements	1.5 V Rechargeable battery One R6 (size AA) battery
Dimensions (w/h/d)	Approx. 77.1 × 108.0 × 22.5 mm (3 1/8 × 4 1/4 × 7/8 inches) excl. projecting parts and controls
Mass	Approx. 152 g (5.4 oz) (main unit only)

Supplied accessories
AC power adaptor (1)
Battery case (1)
Stereo headphones or earphones with remote control (1)
Charging stand (1)
AC plug adaptor (1) (Saudi Arabian model only)
Rechargeable battery (NH-14WM(A), 1.2 V, 1 350 mAh (min), Ni-MH) (1)
Rechargeable battery carrying case (1)
Carrying pouch (1)
Stereo microphone (1)

Design and specifications are subject to change without notice.

This warranty is valid only in the United States.

SONY®

LIMITED WARRANTY

Portable Audio

Sony Electronics Inc. ("Sony") warrants this Product (including any accessories) against defects in material or workmanship as follows:

1. LABOR: For a period of 90 days from the date of purchase, if this Product is determined to be defective, Sony will repair or replace the Product, at its option, at no charge, or pay the labor charges to any Sony authorized service facility. After the Warranty Period, you must pay for all labor charges.
2. PARTS: In addition, Sony will supply, at no charge, new or rebuilt replacements in exchange for defective parts for a period of one (1) year. After 90 days from the date of purchase, labor for removal and installation is available from Sony authorized service facilities or a Sony Service Center at your expense.

To obtain warranty service, you must take the Product, or deliver the Product freight prepaid, in either its original packaging or packaging affording an equal degree of protection, to any authorized Sony service facility.

This warranty does not cover customer instruction, installation, set up adjustments or signal reception problems.

This warranty does not cover cosmetic damage or damage due to acts of God, accident, misuse, abuse, negligence, commercial use, or modification of, or to any part of the Product, including the antenna. This warranty does not cover damage due to improper operation or maintenance, connection to improper voltage supply, or attempted repair by anyone other than a facility authorized by Sony to service the Product. This warranty does not cover Products sold AS IS or WITH ALL FAULTS, or consumables (such as fuses or batteries). This warranty is valid only in the United States.

Proof of purchase in the form of a bill of sale or receipted invoice which is evidence that the unit is within the Warranty period must be presented to obtain warranty service.

This warranty is invalid if the factory applied serial number has been altered or removed from the Product.

REPAIR OR REPLACEMENT AS PROVIDED UNDER THIS WARRANTY IS THE EXCLUSIVE REMEDY OF THE CONSUMER. SONY SHALL NOT BE LIABLE FOR ANY INCIDENTAL OR CONSEQUENTIAL DAMAGES FOR BREACH OF ANY EXPRESS OR IMPLIED WARRANTY ON THIS PRODUCT. EXCEPT TO THE EXTENT PROHIBITED BY APPLICABLE LAW, ANY IMPLIED WARRANTY OF MERCHANTABILITY OR FITNESS FOR A PARTICULAR PURPOSE ON THIS PRODUCT IS LIMITED IN DURATION TO THE DURATION OF THIS WARRANTY.

Some states do not allow the exclusion or limitation of incidental or consequential damages, or allow limitations on how long an implied warranty lasts, so the above limitations or exclusions may not apply to you. In addition, if you enter into a service contract with the Sony Partnership within 90 days of the date of sale, the limitation on how long an implied warranty lasts does not apply to you. This warranty gives you specific legal rights, and you may have other rights which vary from state to state.

For your convenience, Sony Electronics Inc. has established telephone numbers for frequently asked questions:

To locate the servicer or dealer nearest you, or for service assistance or resolution of a service problem, or for product information or operation, call:

Sony Direct Response Center
1-(800)-222-7669
or write to:
Sony Direct Response Center
12451 Gateway Blvd.
Fort Myers, FL 33913

For an accessory or part not available from your authorized dealer, call:

1-(800)-488-SONY (7669)